

Notes:

1. Material:

NdFeB magnet

Housing: LCP UL94 V-0

Brass C3604 Plating: 1u Gold Plated over Nickel

2. Electrical

2.1 Current rating: 3.0A per pin

2.2 Voltage rating: 12 V

2.3 Contact Resistance: 30m OHm Max (Pin)

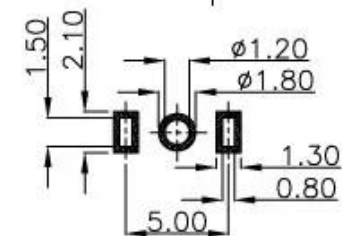
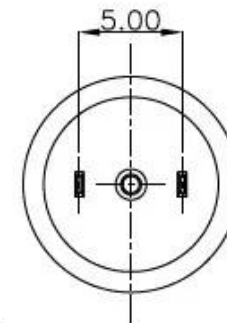
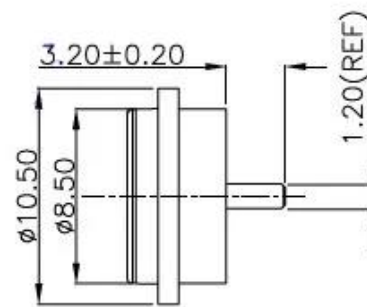
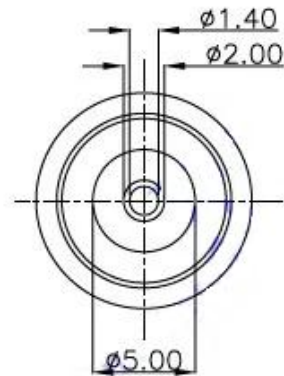
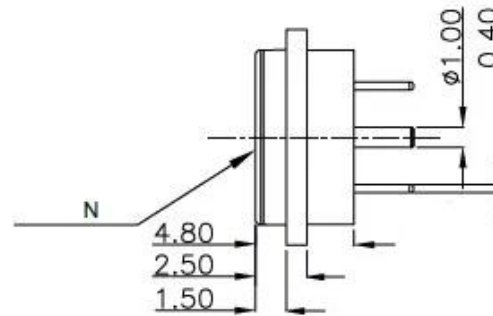
2.4 AC1000V 0.5mA 3 Sec/DC1000V 0.5mA 3 Sec

2.5 Life time: 50000 cycles

3. IPX7 Level waterproof

4. Magnetic Force: Above 400g

5. RoHS, EACH, CP65 compliant



Recommended pcb layout
Layout tolerance: $\pm 0.05\text{mm}$