



# katranji ESR02 pro Digital Component ESR Meter Multi Function Tester User Manual

[Home](#) » [katranji](#) » [katranji ESR02 pro Digital Component ESR Meter Multi Function Tester User Manual](#) 

## Contents

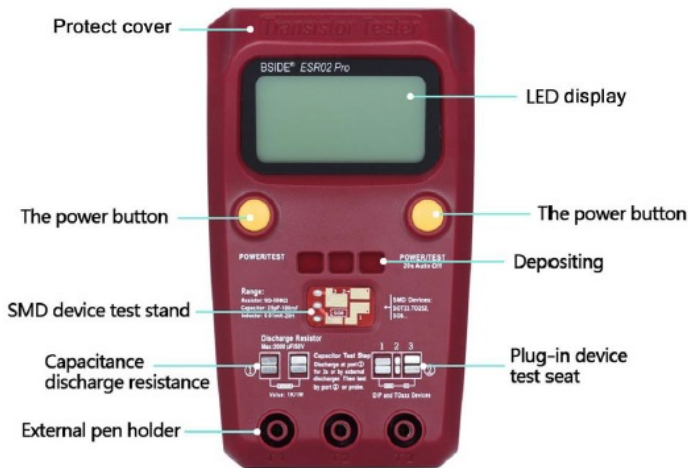
- [1 katranji ESR02 pro Digital Component ESR Meter Multi Function Tester](#)
- [2 Product Details](#)
- [3 Function Testing](#)
- [4 Usage Instructions](#)
- [5 Calibration](#)
- [6 Documents / Resources](#)

# Katranji

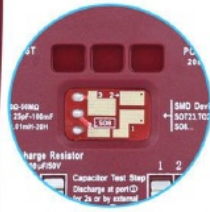
**katranji ESR02 pro Digital Component ESR Meter Multi Function Tester**



## Product Details



Display screen



SMD device test stand



DC power interface  
Voltage input range: 9V - 12V



External pen holder

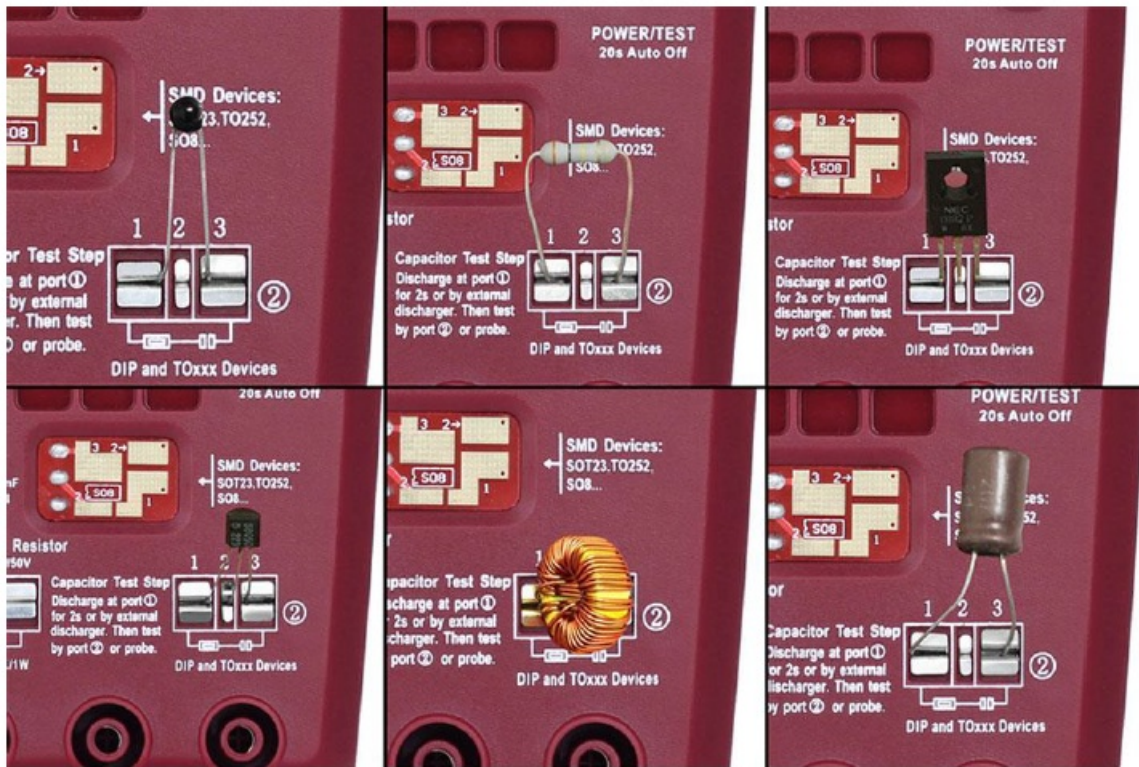


Battery house

Reference contrast

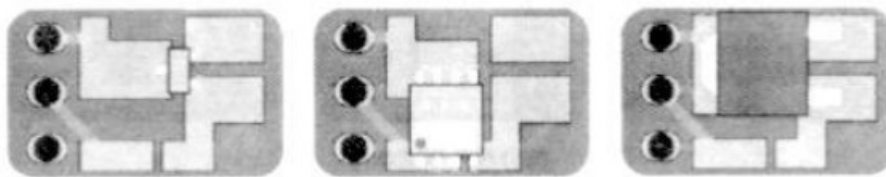
## Function Testing





## Usage Instructions

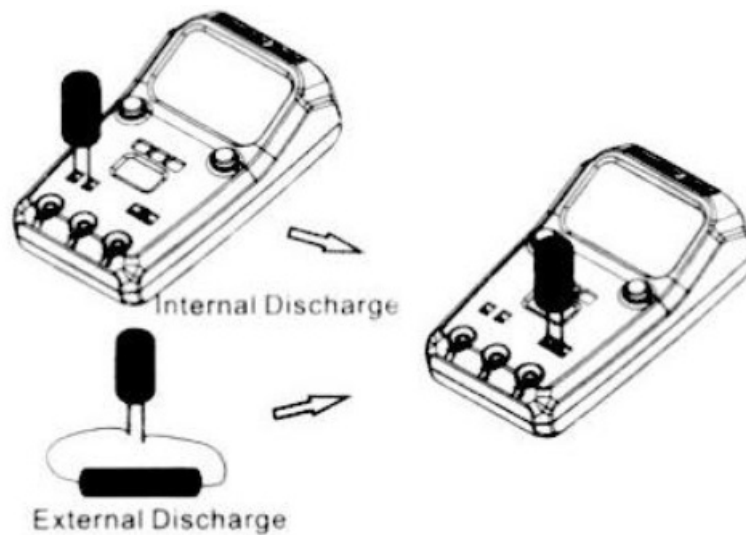
- Power ON: Press the “POWER/TEST” button before using.
- Test: Press the “POWER/TEST” button to start a test. Regardless of the pin sequence, this meter will recognize the pin’s function and layout on the screen.
- Power OFF: Automatically power down if no button operation in 20 seconds.
- Test Socket: With 3 test sockets, SMD socket, Plug-in devices socket, and Probe socket. The ports 1,2, and 3 of each socket are the same, they are connected internally.
- SMD Device Test: Test via SMD socket or probe. While using an SMD socket, put some pressure on-device for better connection.
- 



SMD Device Test Reference

f. Electrolytic Capacitor Discharge Support max 2000uF/50V capacitor discharge with the internal 1K/1W resistor, and discharge of 2 seconds at least.

- Use an external discharger while the capacity is higher.
- Discharge is a standalone function, no need to power on or press a button.



- **Selection Menu:** A long button press (>0.5s) will enter the selection menu for additional functions. Short button press to switch different functions and long button press (>0.5s) to enter Submenu.
- **Switch off:** Long button press to power Off immediately.
- **Transistor:** exit Selection Menu, and return to the transistor test.
- **Frequency:** reserved.
- **Generator:** with the button, the press can select different frequencies output from T2 (Test Port2), and T1, and T3 will be the reference ground. Frequencies are selectable from 1 Hz to 2 MHz, the amplitude is 5V.
- **10-bit PWM:** Generates a 7.8KHz frequency with selectable pulse width at pin T2. With a short button press (<0.5s) the pulse width is increased by 1%, with a longer button press (>0.5s,<1.3s) the pulse width is increased by 10%.
- **C+EST@TP1:3:** It's a stand-alone capacity measurement with ESR measurement at the test pins T1 and T3.
- **Rotary Encoder:** Reserved.
- **Self-test:** Full self-test with calibration.
- **Contrast:** Contrast value for a graphic display, selectable from 33 to 55.

**Note:** In selection mode, the Tester will auto power off after 8 minutes without any button press.

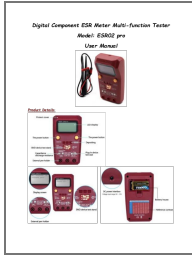
### Attention

- Always be sure to discharge capacitors before connecting them to the tester.
- Power down the equipment if test components are mounted in a circuit.
- If using a DC supply, please choose a DC 9V-12V adapter (including 9V and 12V).
- When the battery power is under 6V, please replace a new one.

### Calibration

- Short T1, T2, and T3 to one, then press the button.
- When LCD shows "Selftest mode.. ?", press the button within 2 seconds to enter calibration mode, otherwise will come into transistor test mode.
- Tester automatic calibration until LCD shows "isolate Probes!", then separate T1, T2, and T3.
- Wait a few seconds until LCD shows "Test End".

## Documents / Resources



[katranji ESR02 pro Digital Component ESR Meter Multi Function Tester](#) [pdf] User Manual ESR02 pro Digital Component ESR Meter Multi Function Tester, ESR02 pro, Digital Component ESR Meter Multi Function Tester, ESR Meter Multi Function Tester, Multi Function Tester, Function Tester, Tester

[Manuals+](#)